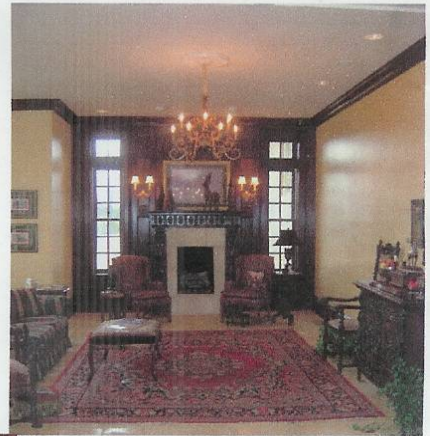


*Coming to Auburn Fall 2006
Fountainview Mansion*



*A property of distinctive elegance for
functions of all types.
Fountainview Mansion will
become one of the true "jewels" of the
Auburn landscape.
Celebrate the vision with us.
Come home to Fountainview!*





Fountainview Mansion Special Features

- Approximately 16,000 square feet
- Parking for 200 – 300 vehicles
- At completion of the proposed addition, the Mansion will have 8 guest rooms and suites, full catering kitchen, floral design studio, private owner quarters, and staff accommodations.

Proposed Guest Services and Revenue Streams for the Fountainview

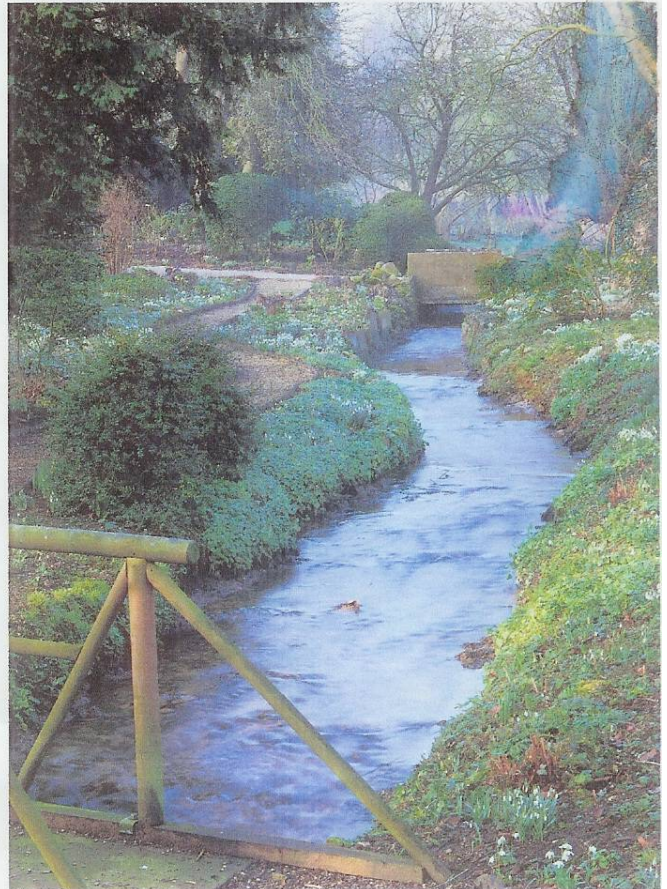
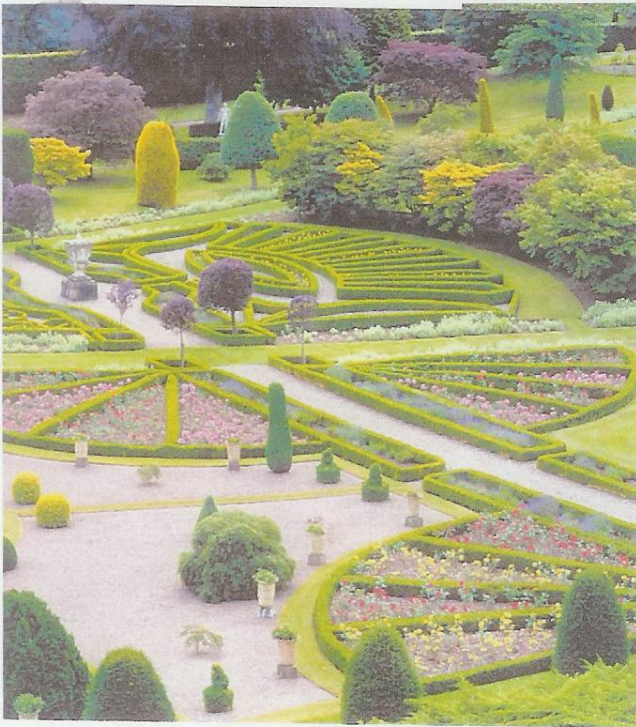
Mansion will include

- Bed & Breakfast accommodations (projected 4 – 5 star)
- Full catering for onsite and off-site events
- Floral design services
- Full service event planning
- Antiques
- Gift items
- Day spa services for mansion guests
- Corporate and university retreats, luncheons, and workshops
- Limousine Service

Ministry Opportunities

It is the deep desire of the developers of this project that it not be only a profitable business venture but also be a ministry. It is planned that a separate 501-c3 organization will be established for religious purposes and provide opportunities for small religious conferences, seminars, retreats and workshops. These events will also help to improve the daily operational bottom line of the profit side of the business by providing facility rental fees, room rentals, and also catering services during weekdays. We would seek to provide a non-denominational place of beauty and tranquility to put strong wings on weary hearts through the love and power of God by providing sessions on topics such as Marriage Enrichment, Grief Recovery, Divorce Recovery, Clergy Rest and Renewal, Christian Business Ethics and many more. This portion of the enterprise would be governed by a separate Board of Directors who would help to raise funds for the development of the grounds which would also be enjoyed by the residents of The Summit subdivision.

As a part of this vision, we hope to develop walking trails called a Walk of Faith, beautiful gardens, fountains, reflecting pools, statuary, and hopefully, a small prayer chapel all inspired by the Crystal Cathedral and Rancho Capistrano grounds. As a 501-c3 organization, individuals and organizations could become a part of the vision and contribute financially to the project as a tax-deductible contribution.



The photos above and to the right show the concept for the planned gardens, reflecting pools, streams, and meditation areas to be shared by guests of Fountainview mansion, residents of The Summit subdivision and the community



It is our goal to create a separate 501-c3 organization for non-demoninational religious purposes to provide the guests with an inspiring place of beauty, serenity, and reflection. Inspired by the grounds of the Crystal Cathedral and Rancho Capistrano in Orange County, California, the gardens would be designed in an English Garden style and feature a Path of Power donated by individuals as a gift of thanks or a memorial to a loved one.



The gardens would feature many water elements to continue the them of the name of the mansion, Fountainview, and would be graced by elegant bronze and marble statuary.

Ministry events

- Marriage enrichment retreats
- Grief recovery
- Relationship seminars
- Church and corporate staff retreats/team building
- Leadership and Visioning Workshops
- Divorce Recovery Retreats
- Pastoral Rest, Recovery, and Renewal

Prayer Concerns

- Final zoning approval by City Council on July 18th
- That the Lord would bring in the needed investment capital to launch the project successfully. Detailed confidential business plans and investment prospectus are available to interested parties.
- That this project will honor and glorify God, the giver of life's hopes, dreams and vision. Soli deo Gloria – To God by the Glory!

